

Building of networks in urban and motorway environments



CLEANFAST

Performance of microtrenches for the deployment of optic and electric networks in urban and motorway environments.

Process

- Axially driven cutting wheel with simultaneous suction and collection of the excavated material.
- Laying of the ducts and backfilling of the trench with a quick-setting and self-placing mortar.

Specific features

- Easily usable road vehicle
- Sound-proofing of the components
- Excavated material loaded by suction
- No material nor dust thrown out during earth works
- Quick network deployment process

Assets

- Cleanliness of trenches and job site
- Vehicle traffic not interrupted during the works
- Limited disturbance to residents
- Increased safety of the work site
- Preservation of the road foundations
- Quick restoration of the road
- Reduction in building costs

Innovations

- Combined cutting and suction of the excavated material
- Quick-setting and self-placing backfill mortar

Output

- Up to 600 ml/day in an urban environment
- Up to 2500 ml/day on motorway



Features of the trenching tool

- Axially driven cutting wheel

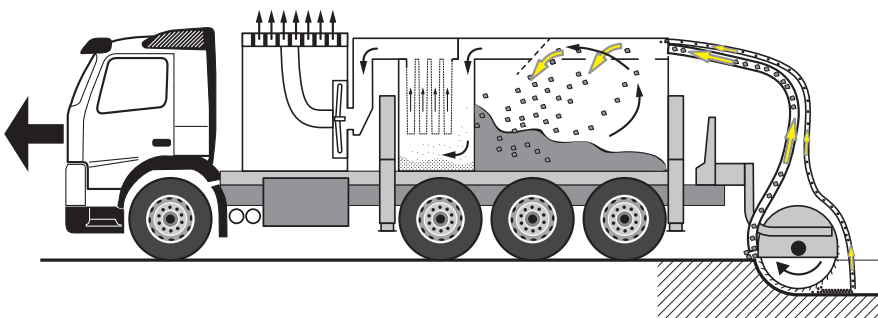
Type of wheel	Cutting width (mm)	Trench depth (mm)
R 250 A	25 to 60	135 to 250
R 350 A	35 to 70	250 to 350
R 450 A	45 to 80	300 to 450
R 500 A	80	250 to 500
R 600 A	100	
	120	
	130	250 to 600
Meteor	10	100
PCD	13 to 19	150 to 250

- Cutting tool mounted on double pivot: cutting radius = 9 m
- Side offset of the tool outside the machine: 250 mm opposite side from driving seat (right or left)

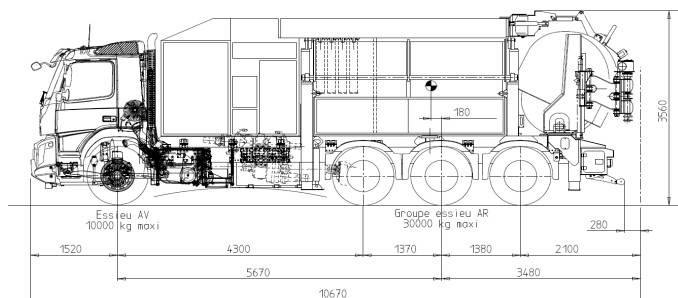
Sizes and weight of the unit

- Length in working position: 12.50 m
- Length in transport position: 11.00 m
- Width: 2.50 m
- Height: 3.80 m
- Unloaded weight: 25.5 tons
- Loaded weight: 32 tons
- Excavated material loading capacity of the bucket: 5.50 m³ abounded
- Unloading height of the bucket: 1.60 m
- Height of the bucket in lifted position: 6.00 m

Operating principle



Technical diagram



Carrier

- Road carrier 8 x 4 Tridem
- 420 ch (309 kW) Diesel engine
- Dual feed system mechanical/hydrostatic

Suction unit

- 85 kW hydraulic turbine
- Capacity: 20 400 m³/hr
- Complete filtration of air rejections with automatic filter cleaning system

Accessories

- Video guiding system
- Radiocontrol piloting
- Radio communication device between operators: walkie-talkie, Peltor helmet