

Masted
Trucks

M26/M30
M40/M50
EURO 2

Rough terrain specialist

- Capability from 2600 kg to 5000 kg
- Lifting height from 3 m to 6 m
- 2- or 4-wheel drive models



 **MANITOU**

M: true rough terrain trucks

The M trucks, from 2.6 to 5 tonnes of capability, enable you to transport heavy, long or bulky loads wherever you wish.

Whether on steep slopes or uneven ground, you will appreciate the benefit of the stability and unequalled traction of these rough terrain trucks from the MANITOU range.



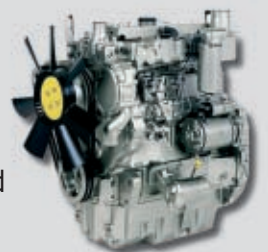
• Robust first and foremost

Uniquely for this kind of truck, the M series are fitted with a solid bloc chassis that is perfectly able to withstand the effects from twisting on rough terrain, with a suspended cab that protects the driver from vibrations, with a steerable rear oscillating axle to give easy manoeuvring on muddy ground and a load absorber as standard to protect the load from damage on difficult ground.



● Power serving effectiveness

To be effective in the yard the operator must be fast and precise, This is why the M trucks are powerful and fitted with a Perkins 1104 C 44 engine that complies with the EURO 2 standard. Its 4 direct injection cylinders develop 84 hp / 61.5 kW at a nominal engine speed of 2200 rpm; combined with the torque converter transmission the operator is able to choose a travelling gear on stable ground or engine torque for traction on unstable ground (4-speed gearbox).



● Unequaled performance

*Popular for their extraordinary ability to drive over obstacles and their ground-holding in muddy conditions, **the M trucks with capacities from 2.6 T to 5 T can carry out a variety of duties in complete safety.***

Designed to give optimum stability, with a wide gauge that can handle long loads in complete safety; with high ground clearance and with wide diameter wheels at the front to cross obstacles more easily, good weight distribution over the axles and a hydraulic differential lock system (optional on the 4-wheel drive) to control the truck under all conditions.



● Extra comfort

The spacious enclosed cab with tinted glass fitted as standard, heating, comfortable adjustable seat, efficient dashboard with control lights, and a system that automatically locks the doors open to give ventilation in hot weather mean that the operator can work effectively in all weathers.



In addition there are the advantages of the ergonomically designed controls placed within easy reach, and of increased safety given by the exceptional visibility round the mast and on the sides of the truck which enable the driver to see his load and surroundings

• **Simpler maintenance**

The fully opening bonnet gives complete access to the engine, gauges, filters and greasers to keep down maintenance time and encourage routine maintenance














• **Versatility under all circumstances**

Available as 2 or 4-wheel drive, the M range includes 6 models: M26.2, M30.2, M26.4, M30.4, M40.4, M50.4. The exceptional traction of the M trucks enables you to be as effective with forks in the yard, with a bucket for picking up bulk loads, a skip for concrete, or wood clamp when dealing with timber.

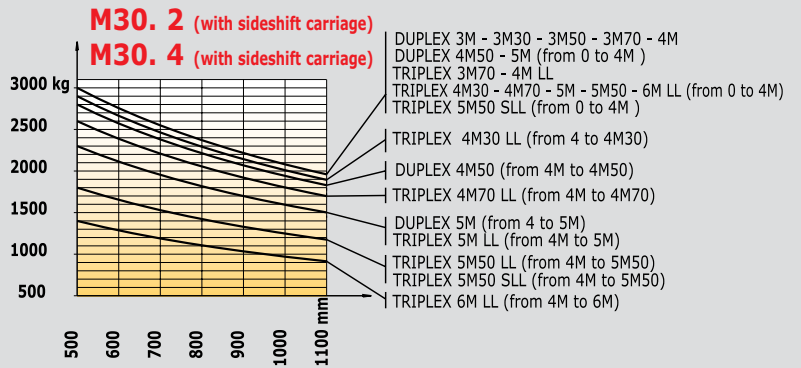
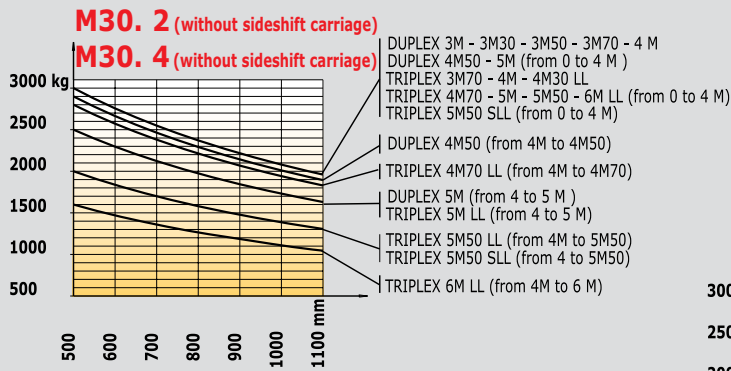
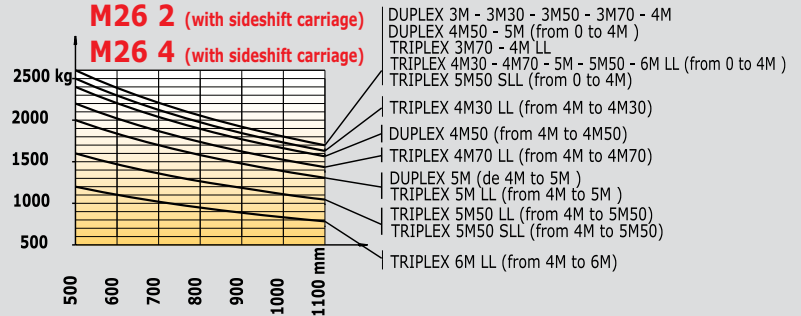
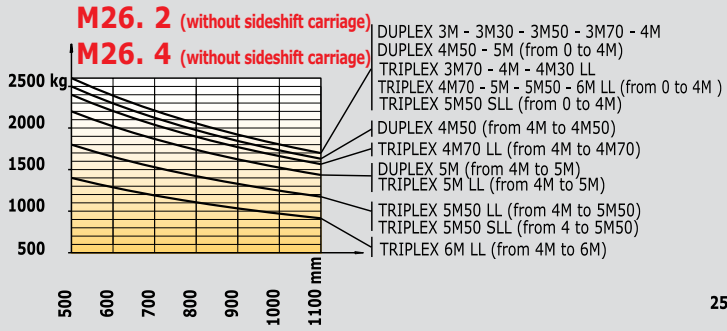


Tyres

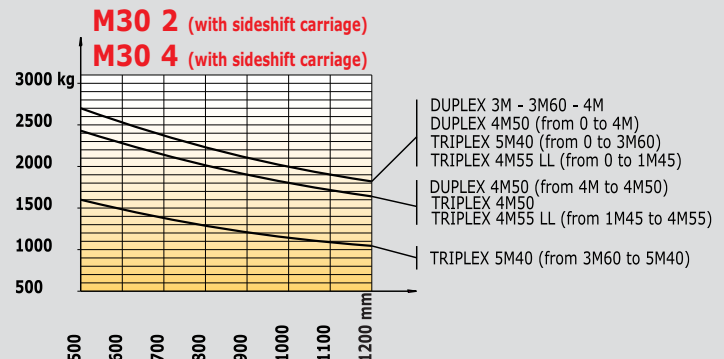
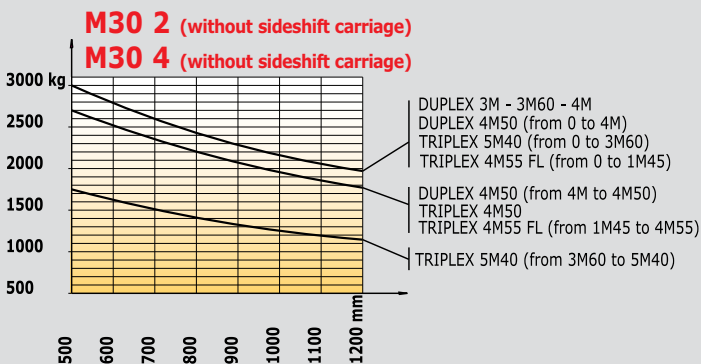
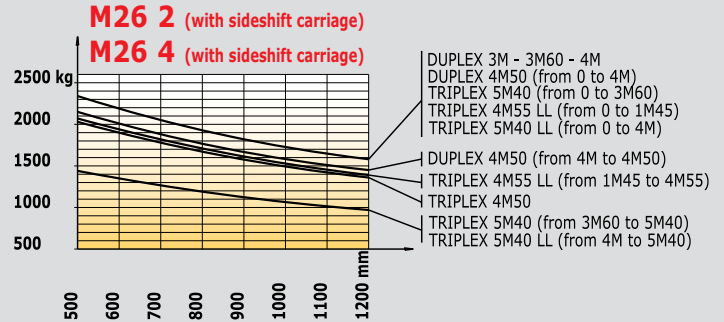
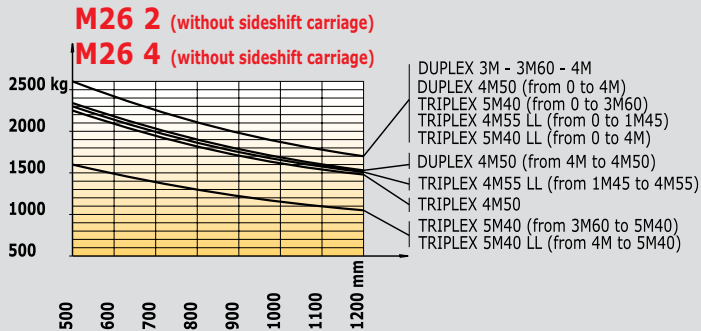
M26.2/M26.4/M30.2/M30.4/M40.4/M50.4

| | | Version | | Tread | Width tyre (mm) | Overall width to the tyres (mm) | Profile |
|------------------|--------------------------|----------------------|-------|--|-----------------|---------------------------------|---|
| Standard fitting | M26.2/26.4 M30.2/30.4 | agricultural version | FRONT | 16.5/85-24 TL SGI 8 PR | 435 | 2105 |  |
| | M26.2 | Industrial version | REAR | 9.00 - 16 EM5 10PR | 275 | 1795 |  |
| | M30.2 | Industrial version | REAR | 10 R 17.5 XZT | 265 | 1785 |  |
| | M26.4 M30.4 | agricultural version | REAR | 10.5/80 - 18 TG 42 Tubeless 10 PR | 275 | 2035 |  |
| | M40.4 M50.4 | All purpose | FRONT | 18 R 22,5 XF Tubeless* (445/65 R 22,5) | 450 | 2070 |  |
| | M40.4 M50.4 | All purpose | REAR | 12,5/80 R18 XM 37 Tubeless | 340 | 2080 |  |
| Optional fitting | M26.2 M30.2 | Sand version | FRONT | 13.0/65-18 IMP E7 Grip Tubeless 12PR | 310 | 1910 |  |
| | M26.2/30.2 | All purpose | FRONT | 13.00 R 24 XGLA Tubeless | 335 | 2070 |  |
| | M26.2 M30.2 | Agricultural version | REAR | 10,5/80 - 18 TG 42 | 275 | 1795 |  |
| | M26.2 | Industrial version | REAR | 10 R 17,5 XZT Tubeless 134/132 L | 265 | 1785 |  |
| | M26.4 M30.4 | Agricultural version | REAR | 12.0 - 18 T86 | 310 | 2070 |  |

Roller masts M26/M30



Load charts Sliding masts M26/M30



Roller masts M26/M30

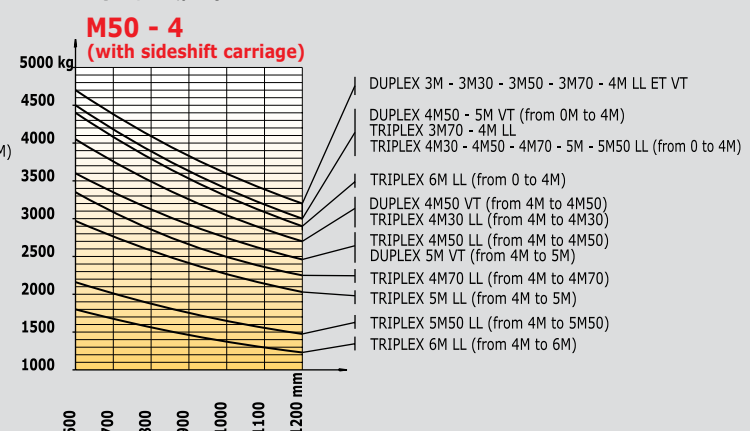
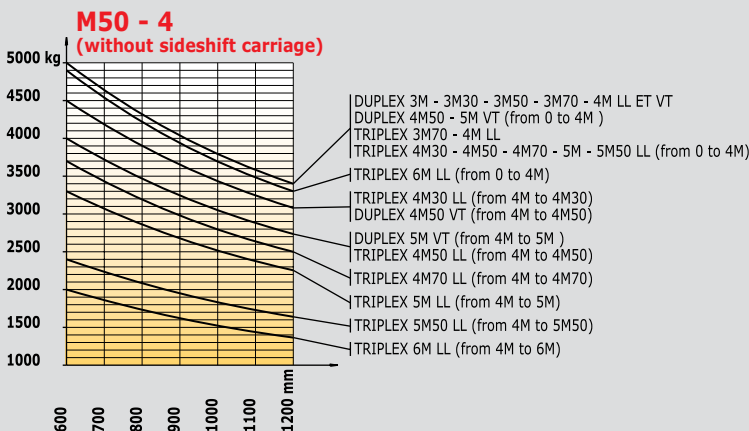
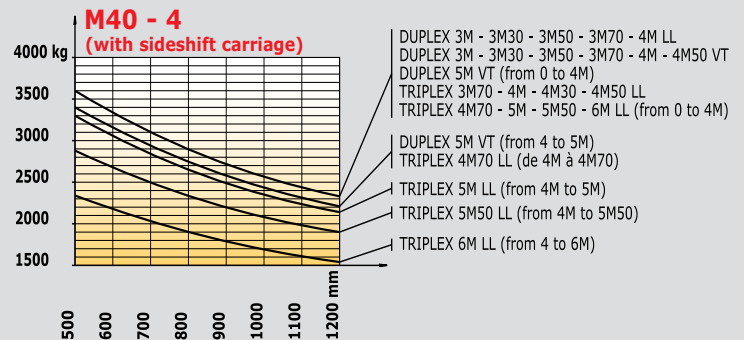
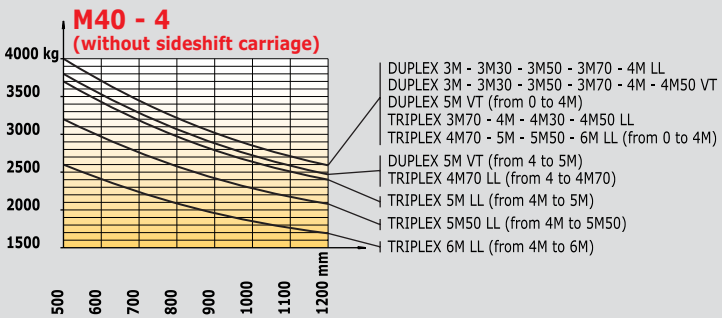
| MASTS | | TYPE OF TRUCK | OVERALL MAST DOWN | FREE LIFT (mm) | OVERALL MAST EXTENDED (mm) | HEIGHT AT MAXIMUM CAPACITY (mm) | | CAPACITY AT MAXIMUM HEIGHT (mm) | | MAST TILT ANGLE FRONT / REAR |
|------------------------------------|--------|----------------------------|-------------------|----------------|----------------------------|---------------------------------|----------------------------|---------------------------------|----------------------------|------------------------------|
| | | | | | | with sideshift carriage | without sideshift carriage | with sideshift carriage | without sideshift carriage | |
| Duplex all round visibility | 3.00 m | M26.2/M26.4 M30.2/M30.4 | 2540 | 130 | 4115 | 3000 3000 | 3000 3000 | 2600 3000 | 2600 3000 | 6°/12° |
| | 3.30 m | M26.2/M26.4 M30.2/M30.4 | 2540 | 130 | 4415 | 3300 3300 | 3300 3300 | 2600 3000 | 2600 3000 | 6°/12° |
| | 3.50 m | M26.2/M26.4 M30.2/M30.4 | 2625 | 130 | 4615 | 3500 3500 | 3500 3500 | 2600 3000 | 2600 3000 | 6°/12° |
| | 3.70 m | M26.2/M26.4 M30.2/M30.4 | 2785 | 130 | 4815 | 3700 3700 | 3700 3700 | 2600 3000 | 2600 3000 | 6°/12° |
| | 4.00 m | M26.2/M26.4 M30.2/M30.4 | 2975 | 130 | 5115 | 4000 4000 | 4000 4000 | 2600 3000 | 2600 3000 | 6°/12° |
| | 4.50 m | M26.2/M26.4 M30.2/M30.4 | 3225 | 130 | 5615 | 4000 4000 | 4000 4000 | 2400 2800 | 2500 2900 | 6°/12° |
| | 5.00 m | M26.2/M26.4 M30.2/M30.4 | 3475 | 130 | 6115 | 4000 4000 | 4000 4000 | 2000 2300 | 2200 2500 | 6°/12° |
| Duplex free lift | 3.00 m | M26.2/M26.4 M30.2/M30.4 | 2540 | 1383 | 4032 | 3000 3000 | 3000 3000 | 2600 3000 | 2600 3000 | 6°/12° |
| | 3.30 m | M26.2/M26.4 M30.2/M30.4 | 2540 | 1533 | 4332 | 3000 3300 | 3300 3300 | 2600 3000 | 2600 3000 | 6°/12° |
| | 3.50 m | M26.2/M26.4 M30.2/M30.4 | 2625 | 1633 | 4532 | 3500 3500 | 3500 3500 | 2600 3000 | 2600 3000 | 6°/12° |
| | 3.70 m | M26.2/M26.4 M30.2/M30.4 | 2785 | 1793 | 4732 | 3700 3700 | 3700 3700 | 2600 3000 | 2600 3000 | 6°/12° |
| | 4.00 m | M26.2/M26.4 M30.2/M30.4 | 2975 | 1983 | 5032 | 4000 4000 | 4000 4000 | 2600 3000 | 2600 3000 | 6°/12° |
| | 4.50 m | M26.2/M26.4 M30.2/M30.4 | 3225 | 2233 | 5532 | 4000 4000 | 4000 4000 | 1600 1800 | 1800 2000 | 6°/12° |
| Triplex all round visibility | 5.50 m | M26.2/M26.4 M30.2/M30.4 | 3055 | - | 6725 | 4000 4000 | 4000 4000 | 1600 1800 | 1800 2000 | 6°/12° |
| Triplex free lift | 3.70 m | M26.2/M26.4 M30.2/M30.4 | 2540 | 1283 | 4732 | 3700 3700 | 3700 3700 | 2600 3000 | 2600 3000 | 6°/12° |
| | 4.00 m | M26.2/M26.4 M30.2/M30.4 | 2540 | 1383 | 5032 | 4000 4000 | 4000 4000 | 1600 1800 | 1800 2000 | 6°/12° |
| | 4.30 m | M26.2/M26.4 M30.2/M30.4 | 2540 | 1533 | 5332 | 4000 4000 | 4300 4300 | 2500 2900 | 2600 3000 | 6°/12° |
| | 4.70 m | M26.2/M26.4 M30.2/M30.4 | 2625 | 1633 | 5732 | 4000 4000 | 4000 4000 | 2200 2600 | 2400 2800 | 6°/12° |
| | 5.00 m | M26.2/M26.4 M30.2/M30.4 | 2785 | 1793 | 6032 | 4000 4000 | 4000 4000 | 2000 2300 | 2800 2500 | 6°/12° |
| | 5.50 m | M26.2/M26.4 M30.2/M30.4 | 2975 | 1983 | 6532 | 4000 4000 | 4000 4000 | 1600 1800 | 1800 2000 | 6°/12° |
| | 6.00 m | M26.2/M26.4 M30.2/M30.4 | 3225 | 2233 | 7032 | 4000 4000 | 4000 4000 | 1200 1400 | 1400 1600 | 6°/12° |

Sliding masts M26/M30

| MASTS | | TYPE OF TRUCK | OVERALL MAST DOWN | FREE LIFT (mm) | OVERALL MAST EXTENDED (mm) | HEIGHT AT MAXIMUM CAPACITY (mm) | | CAPACITY AT MAXIMUM HEIGHT (mm) | | MAST TILT ANGLE FRONT / REAR |
|------------------------------------|-------------------------------|----------------------------|-------------------|----------------|----------------------------|---------------------------------|----------------------------|---------------------------------|----------------------------|------------------------------|
| | | | | | | with sideshift carriage | without sideshift carriage | with sideshift carriage | without sideshift carriage | |
| Duplex all round visibility | 3.00 m | M26.2/M26.4 M30.2/M30.4 | 2625 | - | 4125 | 3000 3000 | 3000 3000 | 2350 2700 | 2600 3000 | 6°/12° |
| | 3.60 m | M26.2/M26.4 M30.2/M30.4 | 2925 | - | 4725 | 3600 3600 | 3600 3600 | 2350 2700 | 2600 3000 | 6°/12° |
| | 4.00 m | M26.2/M26.4 M30.2/M30.4 | 3125 | - | 5125 | 4000 4000 | 4000 4000 | 2350 2700 | 2600 3000 | 6°/12° |
| | 4.50 m | M26.2/M26.4 M30.2/M30.4 | 3475 | - | 5725 | 4000 4000 | 4500 4500 | 2150 2450 | 2350 2700 | 6°/12° |
| Triplex all round visibility | 4.50 m | M26.2/M26.4 M30.2/M30.4 | 2540 | - | 5540 | 4500 4500 | 3600 3600 | 2050 2450 | 2250 2700 | 6°/12° |
| | 5.40 m | M26.2/M26.4 M30.2/M30.4 | 2930 | - | 6530 | 3600 3600 | 3600 3600 | 1450 1600 | 1600 1750 | 6°/12° |
| Triplex free lift | 4.55 m Central cylinder | M26.2/M26.4 M30.2/M30.4 | 2390 | 1450 | 5490 | 1450 1450 | 1450 1450 | 2050 2420 | 2300 2700 | 6°/12° |

Roller masts - Load charts M40/50 - 4

| MASTS | | TYPE OF TRUCK | OVERALL MAST DOWN | FREE LIFT (mm) | OVERALL MAST EXTENDED (mm) | HEIGHT AT MAXIMUM CAPACITY (mm) | | CAPACITY AT MAXIMUM HEIGHT (mm) | | MAST TILT ANGLE FRONT / REAR |
|------------------------------------|--------|----------------|-------------------|----------------|----------------------------|---------------------------------|----------------------------|---------------------------------|----------------------------|------------------------------|
| | | | | | | with sideshift carriage | without sideshift carriage | with sideshift carriage | without sideshift carriage | |
| Duplex all round visibility | 3.00 m | M40.4 M50.4 | 2560 | - | 4115 | 3000 3000 | 3000 3000 | 3600 4700 | 4000 5000 | 15°/15° |
| | 3.30 m | M40.4 M50.4 | 2710 | - | 4415 | 3300 3300 | 3300 3300 | 3600 4700 | 4000 5000 | 15°/15° |
| | 3.50 m | M40.4 M50.4 | 2810 | - | 4615 | 3500 3500 | 3500 3500 | 3600 4700 | 4000 5000 | 15°/15° |
| | 3.70 m | M40.4 M50.4 | 2910 | - | 4815 | 3700 3700 | 3700 3700 | 3600 4700 | 4000 5000 | 15°/15° |
| | 4.00 m | M40.4 M50.4 | 3060 | - | 5115 | 4000 4000 | 4000 4000 | 3600 4700 | 4000 5000 | 15°/15° |
| | 4.50 m | M40.4 M50.4 | 3305 | - | 5615 | 4500 4000 | 4500 4000 | 3600 4050 | 4000 4500 | 15°/15° |
| | 5.00 m | M40.4 M50.4 | 3560 | - | 6115 | 4000 4000 | 4000 4000 | 3400 3600 | 3800 4000 | 15°/15° |
| Duplex free lift | 3.00 m | M40.4 M50.4 | 2585 | 1518 1528 | 4117 | 3000 3000 | 3000 3000 | 3600 4700 | 4000 5000 | 15°/15° |
| | 3.30 m | M40.4 M50.4 | 2735 | 1668 1678 | 4417 | 3300 3300 | 3300 3300 | 3600 4700 | 4000 5000 | 15°/15° |
| | 3.50 m | M40.4 M50.4 | 2835 | 1768 1778 | 4617 | 3500 3500 | 3500 3500 | 3600 4700 | 4000 5000 | 15°/15° |
| | 3.70 m | M40.4 M50.4 | 2935 | 1868 1878 | 4817 | 3700 3700 | 4000 4000 | 3600 4700 | 4000 5000 | 15°/15° |
| | 4.00 m | M40.4 M50.4 | 3085 | 1968 1978 | 5517 | 4000 4000 | 4000 4000 | 3600 4700 | 4000 5000 | 15°/15° |
| Triplex free lift | 3.70 m | M40.4 M50.4 | 2485 | 1255 1265 | 4805 | 3700 3700 | 3700 3700 | 3600 4500 | 4000 5000 | 15°/15° |
| | 4.00 m | M40.4 M50.4 | 2485 | 1355 1365 | 5105 | 4000 4000 | 4000 4000 | 3600 4500 | 4000 5000 | 15°/15° |
| | 4.30 m | M40.4 M50.4 | 2510 | 1455 1465 | 5405 | 4300 4000 | 4300 4000 | 3600 4050 | 4000 4500 | 15°/15° |
| | 4.50 m | M40.4 M50.4 | 2585 | 1530 1540 | 5605 | 4500 4000 | 4500 4000 | 3600 3600 | 4000 4000 | 15°/15° |
| | 4.70 m | M40.4 M50.4 | 2645 | 1590 1600 | 5805 | 4000 4000 | 4000 4000 | 3400 3350 | 3800 3700 | 15°/15° |
| | 5.00 m | M40.4 M50.4 | 2760 | 1705 1715 | 6105 | 4000 4000 | 4000 4000 | 3300 2950 | 3700 3300 | 10°/15° |
| | 5.50 m | M40.4 M50.4 | 2910 | 1855 1865 | 6605 | 4000 4000 | 4000 4000 | 2880 2150 | 3200 2400 | 10°/15° |
| | 6.00 m | M40.4 M50.4 | 3085 | 2030 2040 | 7105 | 4000 4000 | 4000 4000 | 2350 1800 | 2600 2000 | 10°/15° |



M26.2/M30.2 : 2-wheel drive
M26.4/M30.4 : 4-wheel drive
M40.4/M50.4 : 4-wheel drive



Lifting capability

M26.2/M26.4 (500 mm).....2600 kg
 M30.2/M30.4 (500 mm).....3000 kg
 M40.4 (500 mm).....4000 kg
 M50.4 (600 mm).....5000 kg



Standard lifting height.....3,70 m



Tyres

Front:
 M26./M30.16,5/85-24 SGI 8 PR
 M40.4/M50.4.....18 R 22,5 XF TUBELESS
 Rear:
 M26.29.00-16 EM5 10 PR
 M30.210 R17.5 XZT
 M26-4 / M30-4.....10..5 - 80 R18 TG 42 10PR
 M40.4/M50.412,5 /80 R 18 XM 37



Forks (mm)

Length1200
 Width x thickness
 M26/M30125x40
 M 40.4.....150x50
 M 50.4.....150x60



Multidisk hydraulic brakes with oil bath



PERKINS Euro 2 engine

Type1104C 44
 Cubic capacity4 cyl. - 4400 cm³
 Nominal engine speed2200 rpm
 Power (ISO/TR 14396).....61.5 kW (84 hp)
 Maximum torque.....302 Nm at 1400 rpm
 Direct injection
 Water cooled



Transmission.....Torque converter

Reversing shiftelectro-hydraulic
 4 forward and reverse gears
 Max. travelling speed*24 km/h
 Hydraulic differential lock M26.2/M30.2
 Electro-hydraulically controlled disconnect
 M26.4/M30.4/M40.4/M50.4



Hydraulics

Geared main pump:
 Pressure/flow
 M 26.2/M 26.4185 bar/89 l./mn
 M 30.2/M 30.4185 bar/89 l./mn
 M 40./M 50.....210 bar/89 l./mn
 Priority Load sensing flow
 divider for steering145 bar/89 l./mn



Capacity

Cooling system13 l
 Engine oil8,5 l
 Hydraulic oil64 l
 Transmission oil.....15,5 l
 Fuel.....85 l

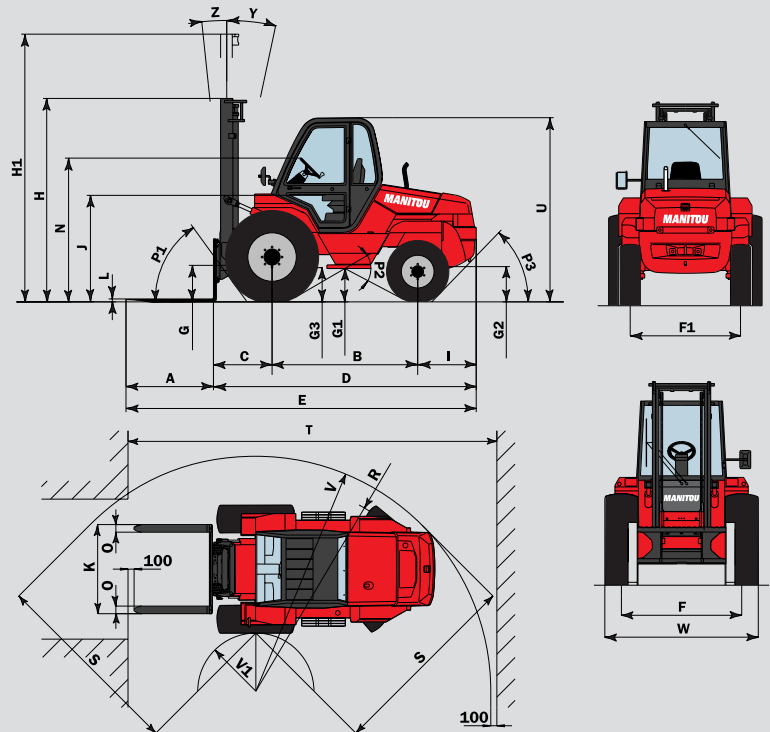


Weight (with standard mast and forks)

M26.2.....5800 kg
 M30.2.....6100 kg
 M26.4.....5880 kg
 M30.4.....6180 kg
 M40.4.....6700 kg
 M50.4.....7660 kg

| | Roller mast | | | | Sliding mast | | | |
|----|----------------|----------------|-------|-------|--------------|-------|-------|-------|
| | M26.2 M30.2 | M26.4 M30.4 | M40.4 | M50.4 | M26.2 | M30.2 | M26.4 | M30.4 |
| A | 1200 | 1200 | 1200 | 1200 | 1200 | 1200 | 1200 | 1200 |
| B | 2000 | 2080 | 2124 | 2124 | 2000 | 2000 | 2080 | 2080 |
| C | 810 | 810 | 762 | 772 | 825 | 830 | 825 | 830 |
| D | 3635 | 3635 | 3745 | 3755 | 3650 | 3655 | 3650 | 3655 |
| E | 4835 | 4835 | 4945 | 4955 | 4850 | 4855 | 4850 | 4855 |
| F | 1650 | 1650 | 1620 | 1620 | 1650 | 1650 | 1650 | 1650 |
| F1 | 1520 | 1760 | 1720 | 1720 | 1520 | 1520 | 1760 | 1760 |
| G | 495 | 495 | 265 | 265 | 455 | 455 | 455 | 455 |
| G1 | 465 | 395 | 365 | 365 | 465 | 465 | 395 | 395 |
| G2 | 420 | 290 | 290 | 290 | 420 | 420 | 290 | 290 |
| G3 | 480 | 480 | 360 | 360 | 480 | 480 | 480 | 480 |
| H | 2785 | 2785 | 2910 | 2910 | 2925 | 2925 | 2925 | 2925 |
| H1 | 4815 | 4815 | 4815 | 4815 | 4725 | 4725 | 4725 | 4725 |
| I | 825 | 745 | 859 | 859 | 745 | 745 | 745 | 745 |
| J | 1480 | 1480 | 1425 | 1425 | 1480 | 1480 | 1480 | 1480 |
| K | 1470 | 1470 | 1670 | 1670 | 1320 | 1320 | 1320 | 1320 |
| L | 40 | 40 | 50 | 60 | 40 | 40 | 40 | 45 |
| N | 1960 | 1960 | 1925 | 1925 | 1960 | 1960 | 1960 | 1960 |
| O | 125 | 125 | 150 | 150 | 125 | 125 | 125 | 125 |
| P1 | 54° | 54° | 43,5° | 43,5° | 54° | 54° | 54° | 54° |
| P2 | 58° | 57,5° | 50° | 50° | 58° | 58° | 57,5° | 57,5° |
| P3 | 46° | 56,5° | 48,5° | 48,5° | 46° | 46° | 56,5° | 56,5° |
| R | 3730 | 3930 | 3985 | 3985 | 3730 | 3730 | 3930 | 3930 |
| S | 3215 | 3115 | 3363 | 3363 | 3215 | 3215 | 3115 | 3115 |
| T | 6140 | 6280 | 6327 | 6327 | 6320 | 6325 | 6295 | 6295 |
| U | 2540 | 2540 | 2485 | 2485 | 2540 | 2540 | 2540 | 2540 |
| V | 3930 | 4070 | 4155 | 4155 | 3930 | 3930 | 4070 | 4070 |
| V1 | 1015 | 1350 | 1120 | 1120 | 1015 | 1015 | 1350 | 1350 |
| W | 2105 | 2105 | 2070 | 2070 | 2105 | 2105 | 2105 | 2105 |
| Y | 12° | 12° | 15° | 15° | 12° | 12° | 12° | 12° |
| Z | 6° | 6° | 15° | 15° | 6° | 6° | 6° | 6° |

mm



Standard fittings:

- Enclosed cab with tinted glass
- Fabric seat
- Adjustable steering column
- Heating
- Front and rear windscreen wipers and washers
- Reversing shift on the steering wheel
- Left-hand external rear-view mirror
- Front and rear road lights
- Hydraulic differential lock on the 2-wheel drive versions

Options

- Hydraulic differential lock on the 4-wheel drive versions
- Various attachments such as buckets, sidsift carriage, clamps etc
- Audible warning when reversing
- Driver's overhead guard
- Rotating beacon
- Work lights
- Wide carriages

Manitou, material handling world leader

Inventor of the rough terrain forklift truck, Manitou offers today the most comprehensive range to meet all specific handling and personal lifting requirements :

Telescopic trucks
MANISCOPIC

Rough terrain
and semi industrial
masted trucks
MANITOU

Access
equipment
MANIACCESS

Compact telescopic
handler
Twisco

Truck mounted forklifts
MANITRANSIT

Backhoe/Loader
with telescopic boom
MANIHOE

Swinging arm
and articulated
wheeled loaders
MANILOADER



A network of skilled professionals at your service

With a network of 500 service and parts centres in more than 100 countries, Manitou provides an efficient after-sales support based on the expertise of 2000 factory trained technicians.

This publication in no way constitutes an offer and the company reserves the right to alter specification without prior notice.
The MANITOU models presented in this brochure can be supplied complete with optional equipment attachments.



MANITOU BF SA
B.P. 249 - 44158 Ancenis Cedex - France
Tél. : 33 2 40 09 10 11 / Export Department Fax : 33 2 40 09 10 97
www.manitou.com

700298EN

